

### 6 Newcastle- special tickets

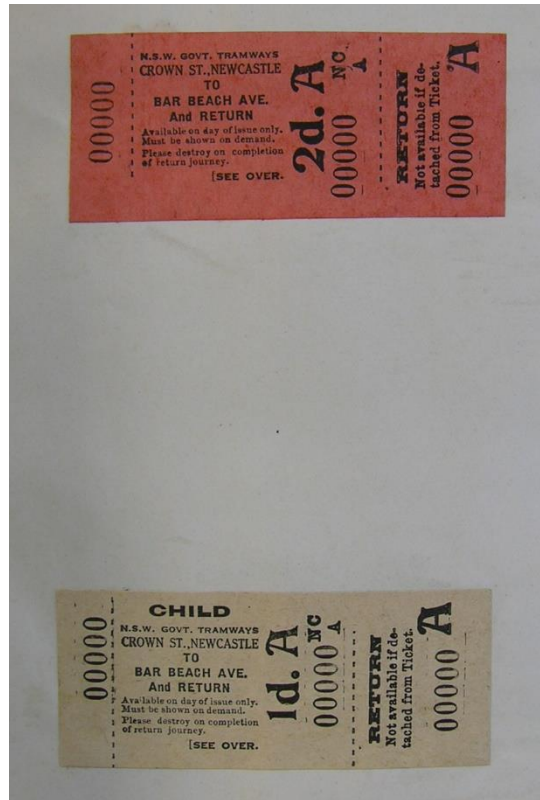
This chapter covers special tickets. General types with “NC” depot code were used for normal services. @ or #= archive, +=usage.

#### 1. Newcastle Bar Beach

##### *NSW Govt Tramways*

2d orange adult (@)

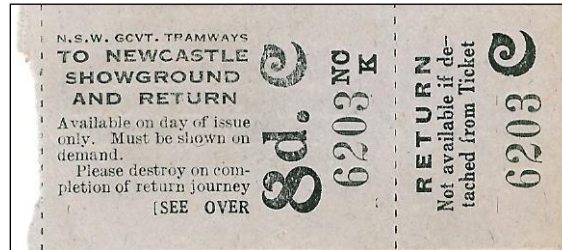
1d buff child (@)



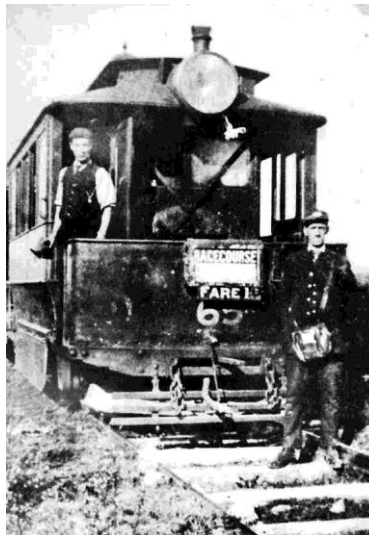
## 2. Newcastle Showground

A 2d yellow child and 8d brown are pasted into the departmental ticket register **but** they are Sydney types!

- Parnell Place/Wallsend -Newcastle Racecourse 1/- return, single 6d; Adamstown Junction-Newcastle Racecourse 6d return



NSW Govt. Tramways in capitals. Week code C.  
8d black/lilac (NC/K)



**3. Newcastle Funeral**

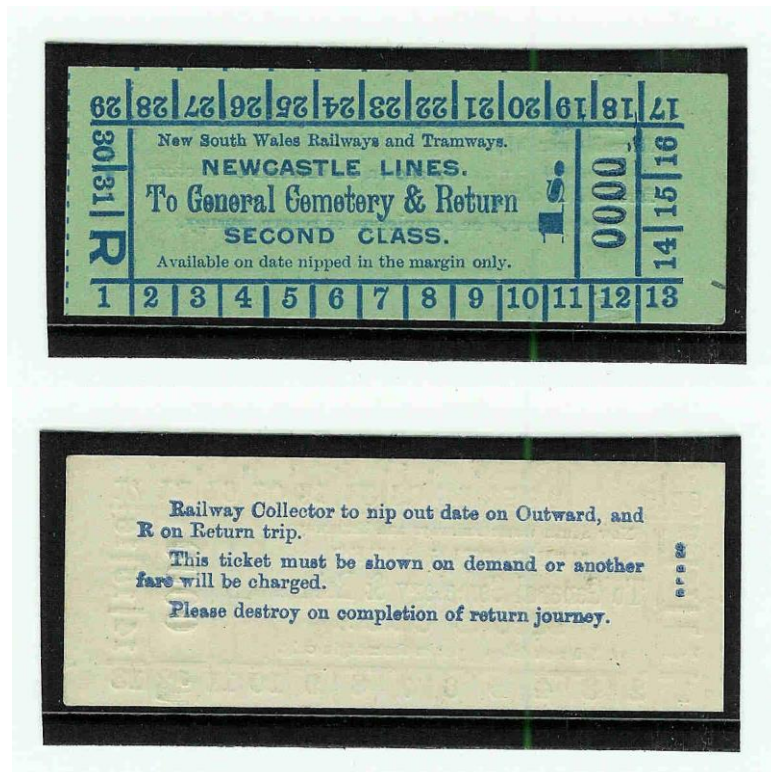
Funerals using the tramway hearse and the regular funeral train service to Sandgate Cemetery were a common occurrence in Newcastle. Special funeral tickets were issued to mourners wishing to avail themselves of this mode of travel before the regular use of motor vehicles brought the funeral tram service to an end.



Tickets show instructions on the back. (@#)

GPrO records show destructions took place 1.00.

The last tram hearse ran 1.6.46.



NB RP (railway print) number on back  
 GPrO destroyed 2.00 Nle funeral 1/- green 2<sup>nd</sup> class, 2/- yellow 1<sup>st</sup> class (damaged stock).  
 TWN25/04 funeral tickets all lines 15.6.04  
 TWN S1/13 illust incl funeral  
 TWNS16/24 funeral 2/4d 1<sup>st</sup> class, 1/ 2 2<sup>nd</sup> class excl Walls-Pl, incl W-Pl 1<sup>st</sup> 2/11 2<sup>nd</sup> 1/9  
 (had been these prices since at least 1920 **check**)  
 TWN19/24 funeral to be torn in half  
 TWNS16/30 has no funeral

### Newcastle Funeral<sup>1</sup>

Supplement to Weekly Notice 24/1913 lists the following tickets by line and these are shown in the Ticket Album:

2/6 violet blue/white 1<sup>st</sup> class, 2/- violet blue/yellow 1<sup>st</sup> class, 1/6 violet blue/pink 2<sup>nd</sup> class, 1/- violet blue/green 2<sup>nd</sup> class

The Working Orders (2nd Edition) of 1 September 1902 and 3rd Edition of 1 July 1904 stated:

**Funeral Tickets – Newcastle Lines** – These tickets, value 2s. First and 1s. Second class, are available by tram and train between Lambton, Merewether, or Plattsburg, and Sandgate Cemetery. Railway Ticket Collectors will punch out the day of the month on outward, and **R** on return, journey, and Conductors must see that these tickets are used on date punched only.

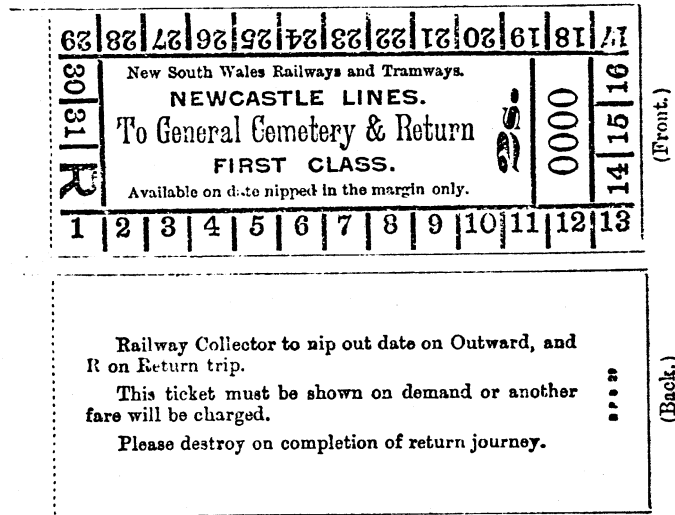
The first paragraph of the instructions in the Working Orders (4th Edition) of 1 March 1908 was amended to read:

<sup>1</sup> Used over any line except Wallsend-Plattsburg.

**Funeral Tickets – Newcastle Lines** – These tickets value 2s. First and 1s. Second class, are available on day of issue by tram and train from the section upon which Funeral Party joined the tram to Sandgate Cemetery and return.

In the Working Orders (5th Edition) of 1 October 1912, the first paragraph was again amended. It now read:

**Funeral Tickets – Newcastle Lines** – These tickets, value 2s. First and 1s. Second Class, exclusive of Plattsburg-West Wallsend line, and 2s.6d. First and 1s. 6d. Second Class, including Plattsburg-West Wallsend, but not Speers Point Line, are available on day of issue by tram and train from the section upon which the Funeral Party joined the tram to Sandgate Cemetery.



The General supplement to the Weekly Notice illustrated the funeral ticket and added the following information:

Colour – 1st-class, Yellow, 2s.; 2nd-class, Green, 1s., exclusive of Plattsburg-West Wallsend Line.

1st-class, White, 2s.6d.; 2nd-class, Pink, 1s.6d., including Plattsburg-West Wallsend Line.

Available from the section where funeral party join the tram to Sandgate Cemetery and return.

The Working Orders (5th Edition) of 1 March 1923 added a new first paragraph and amended the second paragraph:

**Funeral Rates – Newcastle Lines** – The charge for each corpse carried in special funeral hearses over any portion of the Newcastle Lines, Plattsburg to West Wallsend and Plattsburg to Speers’ Point excepted, to be ten shillings, and between any point between Plattsburg and West Wallsend and Plattsburg and Speers’ Point, to or from Newcastle, to be fifteen shillings.

Combined tickets available on day of issue from section on which Funeral party joins the tram, to Sandgate Cemetery and return, excepting on Speers’ Point line, are issued at the rates indicated in the Fare By-laws, General Supplement to Weekly Notice and Public Time-table Book. Cash Fare Tickets must be issued to passengers travelling between Speers’ Point and Plattsburg.

Railway Ticket Inspectors will punch out the day of month on outward and **R** on return journey, and Conductors must see that these tickets are used on date punched only.

The instructions in the Working Orders (7th Edition) of 1 December 1937 were brief:

**Funeral Rates – Newcastle Lines** – The charge for each corpse carried in special funeral hearses over any portion of the Newcastle Lines to be ten shillings.



*A funeral party transfers a coffin from the tramway hearse at Newcastle railway station. The hearse car was hauled on this occasion by coupled L/P class trams.*

*– From New South Wales Tramcar Handbook 1861-1961 Part One (SPER, Sydney, 1975)*

1896 tram/rail 1/- Wallsend-Sandgate

1<sup>st</sup> & 2<sup>nd</sup> class tickets sold on other lines by 1912; 1<sup>st</sup> class 2/= on all trams except Wallsend-West Wallsend extra 6d (1<sup>st</sup> & 2<sup>nd</sup> class).

Hearse charge 15/- West Wallsend of 10/- other lines

Used on electric lines till 1946 though less after motorised transport in more general use.

Mail carried on buses for the last time 1.12.45.