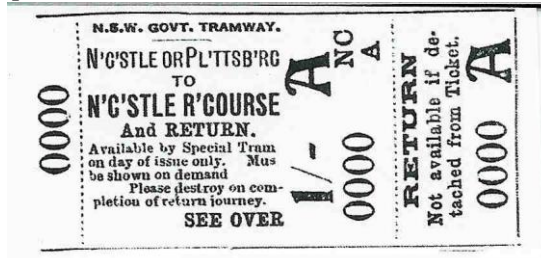


5. Newcastle Racecourse¹

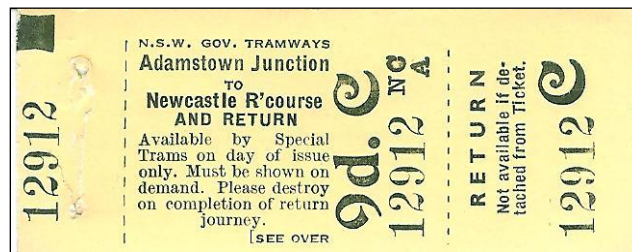
For background see the chapter on Newcastle in the Bus section.



Depot code: NC unless stated

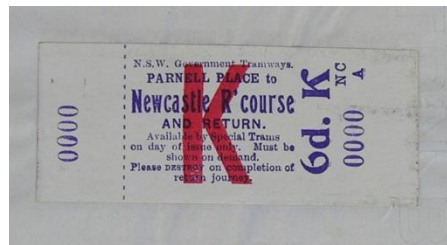
1. NSW GOVT TRAMWAY(sic) (NC/A)

1/- N'C'STLE OR PL'TTSBURG TO N'C'STLE R'OURSE and RETURN (and coupon)#



2. NSW GOVT TRAMWAYS (week codes, K, A, B, C)

- 3d Adamstown Junc. To N'c'stle R'course And return (with return coupon) (#code K)
- 6d Newcastle Racecourse to N'wcastle or Plattsburg purple/white (@ codes red K overprint)
- 6d Racecourse-Newcastle/Plattsburg, black/blue-green (code A @)
- 6d Adamstown Jct-Newcastle Racecourse & return, black/yellow (@ code A)
- 6d Parnell Place to Newcastle Racecourse, blue/white with red K² (@)
- 9d Adamstown Junc. To N'C'stle R'course And return black/yellow (with return coupon) (@#code C)
- 9d Racecourse-Newcastle/Plattsburg, black/blue-green (code B)
- 1/- Newcastle or Plattsburg to Newcastle Racecourse, black/pink (@ code A)
- 1/6 N'c'stle or Pl'tsb'g- N'c'stle R'ecourse And return, pink (@#with coupon week code A&K)



¹ PHM (GPrO exercise book) & destruction records GPrO. *Trolley Wire* 8/1988 notes the Racecourse opened on Saturday 27/4/1907 though at this time special tickets had not been prepared and normal 3d green onward and 3d orange up trip tickets were used.

² # = no overprint, depot code H, week code M



Buses to Newcastle race & showground

In 1949 there was a question of fares to the Dog Coursing Ground on DRT&T buses and Mr Chapman’s private service. Originally both were 6d from Hamilton but with the general fare increase of November 1948 the DRT&T fare rose to 9d, Chapman keeping his to 6d. By July 1949 the DRT&T had reduced back to 6d.³

7.71 race fare 35c, 9.74 80c/40c, 6.76 60c/30c (reduced!)

The following services are listed in Travers & Peck, *Government Bus Routes in Sydney & Newcastle 1932-2005*:

1 Newcastle-Racecourse or Dog Course, intro 22.4.50 replacing tram to Racecourse & 204 which hadn’t run since take over 12.4.49 from R Chapman; ceased ?

2 Hamilton Stn-RC/DC, t/over part 10.4.48 & full 18.12.49 from R Chapman; known as 107 by 11.9.48 then 2 from 12.4.50. Ceased 1984/5.

3 Broadmeadow-RC/DC, intro by 3.2.51, replacing 107 (intro 5.47-10.12.49), ceased about 1986.

4 Mayfield-Showground via Tighes Hill, intro 8.9.50 to AH&I Trotting & Intermittently till 29.12.50. Merewether-Showground, intro 20.2.52, ceased ?

5 Mayfield West-Showground via Mayfield & Tighes Hill, renumbered from 202 (intro ? as Tighes Hill-Sh) after 1.7.51; 25.2.53 extended Mayfield West, ceased ?

6 Carrington-Showground, intro 25.2.59, ceased 2.61

7 Tighes Hill-DCG, intro by 8.3.52, ceased ?

Newcastle Mechanical Hare Coursing Ground

Route 1 MHCG-Hamilton Stn single 40c, return 80c⁴

Rte 2 MHCG-Broadmeadow Jct single 40c, return 80c

No tickets are known

Rte 1 Newcastle Racecourse-Newcastle single 40c

Rte 2 NRC-Hamilton Stn single 40c, return 80c

Rte 3 NRC-Broadmeadow Jct single 40c, return 80c

On special buses to NRC-Wallsend fare will be ordinary fare from Broadmeadow-destination + 40c. Return coupons available but ordinary fare must be paid.⁵

These tickets have not been seen.

³ Unidentified correspondence, State Archives.

⁴ *Combined fare assessment & ticket punching schedules Newcastle 1/76*

⁵ *Combined fare assessment & ticket punching schedules Newcastle 1/76*