

## 22 Stockton vehicular ferries

### *Vehicular ferries*

The Stockton vehicular ferry commenced running in 1916 from Newcastle to the northern suburb of Stockton by the Dept of Public Works. It was taken over by the Dept. of Main Roads in 1930..

Newcastle Council minutes record the following references:

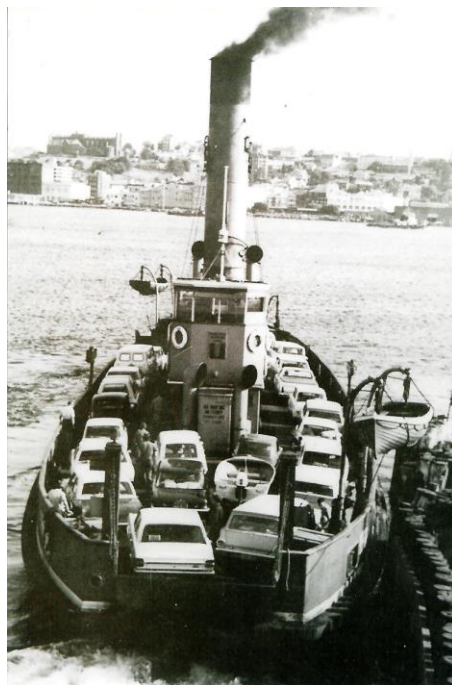
24.2.1919 letter from Stockton Council requesting conference be held

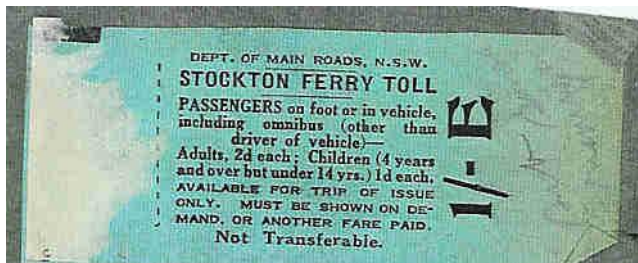
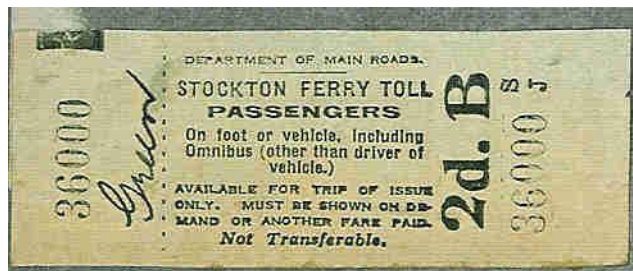
23.4.19 from Stockton Council protesting against excessive punt fares

2.6.19 report on conference 23.5.19 re charges

11.8.19 from Dept of Public Works abolishing vehicular charges on punt; to be thanked.

The vehicular punt (which also carried passengers) was run by the Department of Main Roads after 1932 and a toll was introduced for passengers on this punt from 29 January 1934 to encourage use of the nearby passenger ferry. The original 2d adult fare was increased to 4d from 26 May 1941 but children were still 1d and drivers and vehicles were free. It was noted in 1954 that this was the only punt in the state on which passengers were charged and this remained as a deterrent because it was preferred that passengers catch the passenger ferry whose fares were generally in line with the punt's. From 13 November 1956 the fare was increased to 6d adult and 2d child with pensioners 1d. In February 1958 the adult fare became 7d and the child fare 3d, later 9d which was converted to 8c and 2c at decimal currency in 1966. Further increases to 8c and 10c (4 July 1967) took place before the punt was replaced from 2 November 1971 by a bridge. Bus routes in the area were also altered to accommodate this.



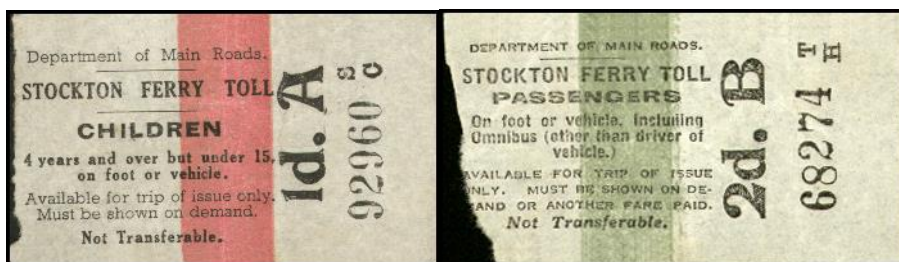


**1. Department of Main Roads**

*The letter after the value increases with value in this series, but not necessarily in those that follow. The smaller letters appear to be order numbers.*

- 1d A children, pink S/A<sup>1</sup>
- 2d B passengers, green S/J<sup>2</sup>
- 3d C passengers (multiple), white (A/A)
- 6d D passengers (multiple), yellow
- 1/- E passengers (multiple), blue

*Note that the original 1d and 2d coloured tickets (DEPARTMENT OF MAIN ROADS, code S) were later supplemented by 3d, 6d and 1/- (DEPT. OF MAIN ROADS N.S.W.) for multiple fares. Clearly there are other tickets in this series still to be seen.*



**2A. Black print with thin colour band,(as tram ticket) Gothic value.**

- 1d A children, pink S/C
- 2d B passengers, green T/H, T/K, T/I
- 4d F buff A/E
- 1/-

<sup>1</sup> 4 years and over but under 14, on foot or in vehicle

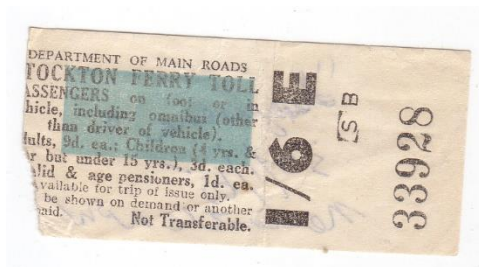
<sup>2</sup> It appears the higher values were for multiple passengers. The wording on each reads “passengers on foot or in vehicle, including omnibus (other than driver of vehicle): adults 2d each; children (4 years and over but under 14 yrs) 1d each”.



**2B. Non Gothic value.**

5d G orange A/F

8d H lilac A/A



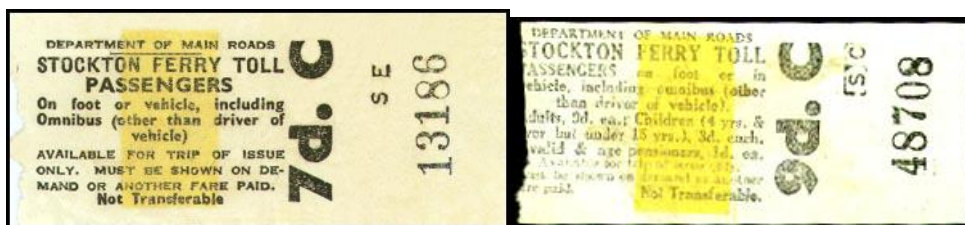
**3. Horizontal bar.**

1d pink SB

6d D passenger, yellow B/C

1/6 E blue SB





**4. Bold values.**

- 2d B green AA
- 4d F buff SP
- 7d C passenger, yellow SA, SC, SI
- 9d C passengers, yellow SV (27mm wide)<sup>3</sup> SB SG
- 9d C yellow SG
- 1/- E passengers, blue bar<sup>4</sup> 32mm
- 1/6 passengers, blue bar along SB, SA
- 2/3 F passengers, blank SA



**5. Decimal currency.**

- 7c C passengers, yellow SE, SA
- 8c C passengers, yellow SV (30mm wide)<sup>5</sup> SQ, SV



**6. Printed in colour with black no. Wide ticket.**

- 1c A red SC
- 2c B child, green SC, SG
- 6c E passengers, blue SD<sup>6</sup>
- 8c C passengers, orange SI, SW
- 10c D passengers, purple SB, SD

<sup>3</sup> Adults 9d ea; children (4 yrs &/over but under 15 years) 3d each/invalid & age pensioners 1d ea.

<sup>5</sup> Adults 8c ea; children (4yrs &/over but under 15 years) 2c each/invalid & age pensioners, 1c ea.

<sup>6</sup> Note: out of sequence

16c E passengers, blue SD, SE  
 24c F (multiple passengers), black SC



7. Printed in colour with black no. Thinner ticket.  
 16c E passengers, blue SC

***Stockton Council minutes (a selection 1917-30)***

- 27.3.17 complaints that horse punt did not run late evenings
- 29.1.18 Newcastle Ferry Co mentioned
- 2.7.18 40 min service on punt 9am-1pm
- 30.7.18 punt till 11pm
- 11.2.19 Publ Works Dept re punt charges from 8pm
- 22.4.19 ordinance allowing council to charge for wharves (later correspondence also with ferry co unwilling to pay £102 pa)
- 12.8.19 PWD, punt fees abolished
- 28.9.19 public meeting re ferry charges (30.1.20 special mtg also)
- 23.3.20 ferry service to steelworks direct proposed (ferry co said would not pay but eventually started 4.20)
- 10.8.20 objections to ferry co abolishing monthly ticket (which they claim was misused) also mention of cash turnstiles, possibly council take over?
- 8.2.21 increased patronage on punt but cannot duplicate service
- 20.7.21 ferry co increase fares on monthly ticket by ½d to Stockton & 1d to Nth St -also mention of free punt Walsh Is
- 11.5.22 Newc F Co (Robbins), no dividend paid for 2 years, loses on steelworks runs & passengers using free punt partic. Weekend/hols
- 1.7.22 ferry co, monthly & quarterly tickets abolished
- 8.8.22 beginning of long saga about a toilet on punt (eventually built near wharf)
- 12.12.22 punt would operate after midnight if due notice given
- 18.3.24 LG Cox, calling at ferry wharves, councils charges advised & Nwc Ferry Co weekly, monthly & quarterly tickets mentioned
- 19.12.28 Sydney Bruce, new ferry service (29.1.29 withdraws application)
- 12.3.30 Council Ferries Committee (ad hoc), considers delicate financial position of Newc Ferry Co
- 17.4.30 FC meeting, proposals from Stockton Ferry Syndicate (J Callen, sec) 3d cash return, concession 5/- per book & LJ Cox, 2d cash return, 10/- men monthly, 8/- women, 6/- over 18, 2/- child; Cox preferred
- 6.5.30 Cox motion defeated.
- 20.5.30 FC re no more child cash tickets but books of 25 not 100

17.6.30 Ferry co in reply, concession tickets in books of 25, 50 & 100, 100 child reduced  
3/->2/-

4.6.30 punt “Mildred” needing repairs

*NSW Govt Ferries tickets are believed to have been used on the PWD punts at Ryde (Sydney) and Stockton (Newcastle) and possibly others. See the volume on Ferries & Tolls.*



*HCVA charter on last days of Stockton Ferry. Route number & destination fictitious. Sign says “Dept of Main Roads. Pedestrians pay toll here”.*