

Sydney Harbour

<p>PUBLIC TRANSPORT COMMISSION OF N.S.W.</p> <p>GARDEN ISLAND EMPLOYEES ONLY</p> <p>WORKMAN'S TICKET</p> <p>48</p> <p>MONDAY to FRIDAY (inclusive) Ending 25th March, 1977 No 9702</p>	<p>PUBLIC TRANSPORT COMMISSION OF N.S.W.</p> <p>WEEKLY TICKET AVAILABLE</p> <p>Mosman, Neutral Bay, Taronga Park and Circular Quay Services</p> <p>43</p> <p>MONDAY to SUNDAY (inclusive) Ending 8th April, 1979 No 48031</p>	<p>COCKATOO DOCKS Employees Only</p> <p>WORKMAN'S TICKET</p> <p>C D 1-80</p> <p>January-March Monday to Friday (Inclusive)</p> <p>No 817</p>
---	---	--

PUBLIC TRANSPORT COMMISSION OF N.S.W.
Single Fare

A No 14262 20c

INTERMEDIATE WHARFS
TO BE DESTROYED ON DISEMBARKING

Available on day of issue only

Available on day of issue only

URBAN TRANSIT AUTHORITY OF N.S.W.

GLADESVILLE - MEADOWBANK **20c**
Concession

SINGLE TRIP ONLY No 10726 A

Available For Nominated Trip Only

R.15857

HYDROFOIL
MANLY TO
CIRCULAR QUAY

U.T.A. - SINGLE

URBAN TRANSIT AUTHORITY OF N.S.W.

Adult

MOSMAN - NEUTRAL BAY \$1.20
TARONGA ZOO - VALENTIA STREET

SINGLE TRIP ONLY No 39656 S

URBAN TRANSIT AUTHORITY OF N.S.W.

Concession

MOSMAN - NEUTRAL BAY 60c
TARONGA ZOO - VALENTIA STREET

SINGLE TRIP ONLY No 92064 D

STATE TRANSIT AUTHORITY OF N.S.W.
BUS AND MANLY FERRY
ADULT

24AA280149

Available on all STA Buses operating North of Spit Bridge and South of Narrabeen Lagoon to Manly Wharf. NOT TRANSFERABLE. Available for one trip on day of issue ONLY. Must be SHOWN ON DEMAND and handed in at quay barrier.

TO BE DESTROYED ON DISEMBARKING
Available on day of Issue only

STATE TRANSIT AUTHORITY OF N.S.W.

CIRCULAR QUAY - DARLING HARBOUR - DARLING ST. - McMAHONS POINT **\$2.20**
Adult

SINGLE TRIP ONLY No 09615 A

Sydney Ferries

State Transit **CONCESSION**

INNER HARBOUR

SINGLE TRIP ONLY No 00402

EMERGENCY. GOOD FOR DAY OF SALE ONLY

Sydney Ferries Corporation

CONCESSION

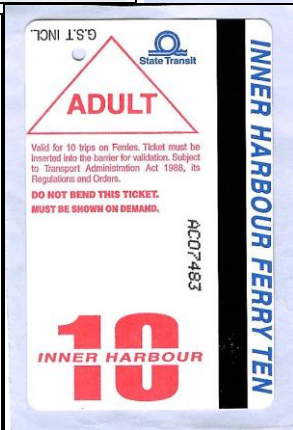
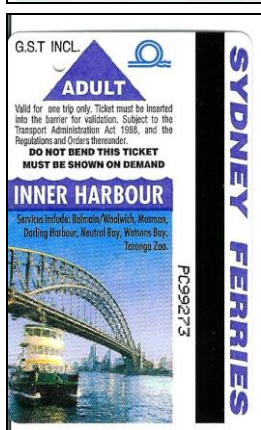
SINGLE FARE INNER HARBOUR

DATE

PRICE INCLUDES GST **\$2.60**

NON TRANSFERABLE
VALID DAY OF ISSUE ONLY - NO REFUNDS
Fare evasion is a crime. Always carry a valid ticket. Penalties apply
Subject to the Transport Administration Act 1985 and the regulations and orders thereunder

No 59608
HC



Stockton

