

SEE OVER

OMNIBUS WEEKLY TICKET

AVAILABLE to end of WEEK No. —	TRIPS OUT	Available between Points as punched.		TRIPS IN
	a m p m			a m p m
1	1 ST	Parbury Road.	Newcast e	4 TH
2	2 ND	Swansea or Black-smiths	Steel Works	2 ND
3	3 RD	Pelican	Heavy Industries	3 RD
4	4 TH	Naru, Marks Pt. Belmont, Jenner Ct	Sunnyside (Gonnan's)	4 TH
5	5 TH	Bennett's Green	Bank Corner	5 TH
6	6 TH	Gateshead	Broad-meadow	6 TH
7	7 TH	Wallsend or Croudace Road	Charles-town Adams-town	Junior Employee
8	8 TH	Wallsend Boundary	Kahibah Warner's Bay	Child
9	9 TH	Cockle Creek	Kahibah Turn off Speers Pt.	Male
0	0 TH	Eleebana	Redhead or Lambton B Violet Town Rd (Mount Hutton)	Female
1	1 ST	Valentine	Dudley Clydsell	Cardiff Station or Subway
2	2 ND	Wallarah	Burwood No. 3 or White-bridge Cross Roads	Curry Lane
3	3 RD	Catherine Hill Bay	John Darling South Cardiff (John St.)	Brett St
4	4 TH	15804		Cardiff Work-shops

1/-	9/-	8/-	7/-
6/-	5/-	4/-	3/-
2/-	1/-	6d.	3d.

Omnibus Weekly Ticket

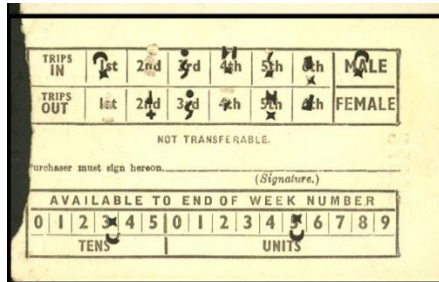
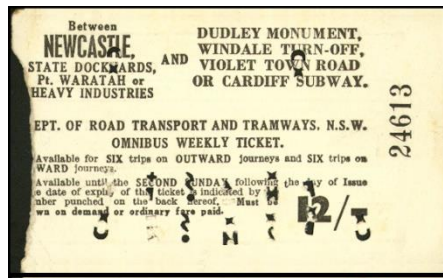
CONDITIONS—SEE BACK

MONTH	TRIPS OUT	Available between Points as punched.		TRIPS IN
1	1 ST	Wood St Wickham or Sunnyside Ind.	New'stle State Dk., Pt. W'tah, H'vy Ind.	1 ST
2	2 ND	South Swansea	Broad-meadow	2 ND
3	3 RD	Swansea	Violet Town Rd.	3 RD
4	4 TH	Black-smiths	Lake St. Warners Bay	4 TH
5	5 TH	Naru Arthur Street	Ryan St.	5 TH
6	6 TH	Belmont (Gen. St.)	Speers Pt. Terminus	6 TH
7	7 TH	Cherry Road	John Darling T.O. Violet Town T.O.	Boolaroo Burwood Colliery
8	8 TH	Eleebana	Strath-more Glen-dale	John Darling Colliery
9	9 TH	Valentine T.O.	Windale Cardiff Works'ps	Mine Camp
0	0 TH	Valentine	Windale T.O. Cardiff Subway	Middle Camp
1	1 ST	Bula Street	Hesbon Street Gateshead Curry Street	Catherine Hill Bay
2	2 ND	Dudley Monument	Charles-town Cardiff School	Hills-borough
3	3 RD	Dudley	Highfields Gertrude & Henry Sts. Sth. Cardiff	Clydsell
4	4 TH	Redhead or Lambton B. Coll.	91709	
5	5 TH			Jonathon Street

£1	10/-	9/-	8/-
7/-	6/-	5/-	4/-
3/-	2/-	1/-	6d.

Fixed value Newcastle

1942 Swansea-Steelworks 6/-, 9/-



12/- Newcastle-Dudley Monument &c...Cardiff Subway (white) 5.11.51⁵

14/- N-Dudley or Redhead...Hillsborough (mauve) 5.11.51

17/- N-Naru, Lk St Warners Bay (rte 364) (green) 5.11.51

20/- N-South Swansea/Valentine (light blue) 5.11.51

1.7.56 number of tickets increased from 4 to 5

19/- N-Dudley Monument &c...Cardiff Subway (white)*⁶ 3

21/6 N-Dudley...Argentton (white)

24/- N-Speers Pt...Belmont (yellow)*

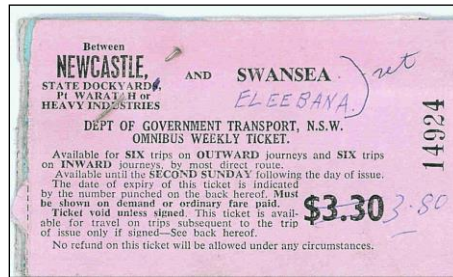
27/- N-Naru, Lk St Warners Bay (rte 364) (green)

30/- N-Swansea (white, pink)*

(2 backs: signature OR signature must be prefixed...)

⁵ Date from *Adjustment of omnibus fares & sections instructions* 5.11.51 & repeated in *Omnibus Fares Book* 7.52. 56 fare rises 4 weeklies increased to 5.

⁶ NSW Gov Printer proofs on buff paper, archive proofs in colours seen.



Proof: NSW Govt Printer

\$3.30 Newcastle-Swansea (pink), \$2.20 blue changed by pen to \$3.30, \$2.15 grey changed by pen to \$2.70⁷

Others probably exist. The fact that they have not been seen attests to the change of Newcastle away from an industrial city.

Additional notes

Notice 30.11.53, reprinted 5.1.55	1	2	3
Newcastle or Civic Stn, Pt Waratah/Heavy Ind	12/-	14/-	14/-
Wood St Wickham/Sunnyside	10/-	12/-	13/-
Broadmeadow Jct	9/-	11/-	12/-
Kahibah turn off	-	8/-	9/-
1 Smart St Charlestown, Bula St/Dudley Monument			
2 Dudley			
3 Redhead			

<i>Routes 341-352 (3.65)</i>	1	2	3	4	5	6	7	8	9	10	11
Newc, Civic Stn, Pt W.HI	19/-	19/-	21/6	21/6	24/-	24/-	27/-	27/-	30/-	30/-	32/6
Wood St W/Sunnyside	16/-	16/-	19/-	19/-	21/6	21/6	24/-	24/-	27/-	27/-	30/-
Broadmeadow Jct	13/6	16/-	16/-	19/-	19/-	21/6	21/6	24/-	24/-	27/-	27/-
Smart St Charlestown	-	-	11/-	13/6	13/6	16/-	16/-	19/-	19/-	21/6	21/6
John Darling turn off	-	-	-	-	-	-	-	-	13/6	13/6	19/-
Glen St Belmont	-	-	-	-	-	-	-	-	11/-	13/6	13/6
<i>1 Hesbon St Gateshead; 2 Windale turn off; 3 Strathmore poultry farm/Windale; 4 Violettown turn off; 5 John Darling turn off; 6 Glen St Belmont; 7 Arthur St; 8 Naru; 9 Blacksmiths; 10 Swansea; 11 Sth Swansea</i>											

<i>Routes 336 338 360 364 366 (3.65)</i>	1	2	3	4	5	6	7	8	9	10	11	12
Newc, Civic Stn, Pt W.HI	19/-	19/-	21/6	21/6	24/-	24/-	27/-	27/-	30/-	30/-	32/6	32/6
Wood St W/Sunnyside	16/-	16/-	19/-	19/-	21/6	21/6	24/-	24/-	27/-	27/-	30/-	30/-
Broadmeadow Jct	13/6	16/-	16/-	19/-	19/-	21/6	21/6	24/-	24/-	27/-	27/-	30/-
Glendale	-	-	-	-	-	-	-	13/6	13/6	16/-	16/-	19/-
<i>1 Curry S; 2 Cardiff subway; 3 Glendale; 4 Victoria St Argenton; 5 Second St Boolaroo; 6 Speers Pt; 7 Ryan St; 8 Lake St Warners Bay; 9 Cherry Rd; 10 Eleebana; 11 Valentine turn off; 12 Valentine</i>												

⁷ GPrO proofs (PHM)

Newcastle Fare schedules

1.7.56 Newc to Dudley Monument &c 19/-, Dudley etc 21/6, Speers Pt &c 24/-, Naru etc 27/-, Swansea 30/-

Newc punched weekly & fixed price 7.71 \$4.30 (8-9 secs, Dudley Monument and Violet Town rd/Windale turn off/Cardiff subway/Cardiff sch), \$4.85 (10-11 Redhead & Lake st rte 327/Margaret & Kins st rte 328/Marlborough rd, Cardiff sth, Highfields rte 338/ Victoria st Argenton, Tingira Hts to, John st Thighes Hill rte 342), \$5.40 (Jewells via Redhead, & Speers Pt/Bayview st-ELP531/Lois Cr/Glen st Belmont/St Johns rd rte 342) \$5.95 (Pt Waratah & Valentine rte 342, Eleebana, Belmont Depot via Redhead)

To/from Nle/State Dockyard/Pt W or HI

Weerklies available on 321/2/3 327/9 328 336/7/8 340-59, 342, 360-6, 421-2 425 427/8/9 430 432 434 435 436 437 438 439 441-58 463 464 467 522

Replaced by coupons 9.74.

358

OMNIBUS WEEKLY TICKET

TRIP NO	Available between Points as marked	TRIP NO	
1 ST	Parbury Road Newcastle	1 ST	
2 ND	Swansea for Blacksmiths Steel Works	2 ND	
3 RD	Pelican Heavy Industries	3 RD	
4 TH	Naru, Haras Pt, Schorn, Jenner Cr, Sunnyside (Gottman's)	4 TH	
5 TH	Bennett's Green Bank Corner	5 TH	
6 TH	Dateshead Broadmeadow	6 TH	
Wallsend or Grouse Road	Charlestown Adamstown Junior Employee		
Wallsend Boundary	Kahibah Warner's Bay Child		
Cockle Creek	Kahibah Turn off Speers Pt Male		
Eleebana	Redhead or Lambton B Violet Town Rd (Mount Hutton) Female		
Valentine	Dudley Clydesell Cardiff Station or Subway		
Waratah	Barwood No. 3 or Whitebridge Cross Roads Curry Lane		
Colliery Services	John Gardino South Cardiff (John St) Brett St.		
10/-	9/-	8/-	7/-
6/-	5/-	4/-	3/-
2/-	1/-	6d.	3d.

This ticket is not transferable and must be shown on demand or another fare paid. Available for SIX Inward and SIX Outward trips only up to and including the expiry date printed on the front hereof.
 312 REPORT OF NEWCASTLE WEEKLY TICKETS—Continuing Monday, 24th February 1947. The fares shown in this report are the fares in force on the actual routes. The portion used to indicate expiry date has been simplified. A freights charge is levied on all tickets. Conductors to receive equivalent with the position of the weekly fares.
 Existing instructions regarding issue, punching, prices, etc., will remain unaltered.
 DEPARTMENT OF ROAD TRANSPORT AND TRAMWAYS, N.S.W.

(44-1) 87-135)

BWN27/46